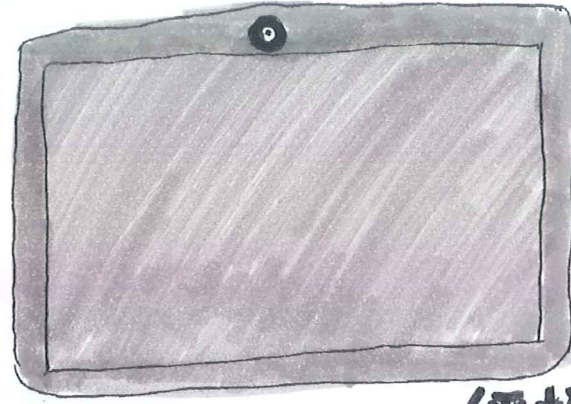
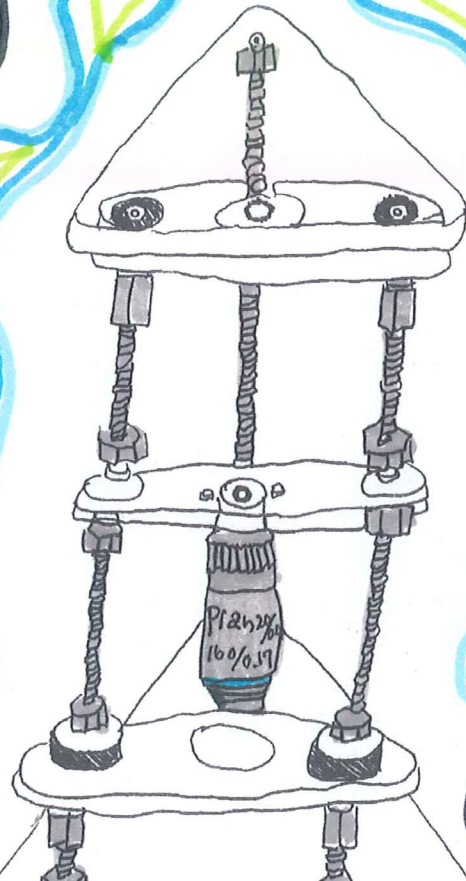
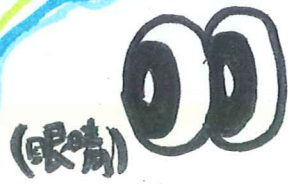


# 用顯微鏡看水蚤的秘<sup>出</sup>密<sup>虫</sup>生

(觀察用具)



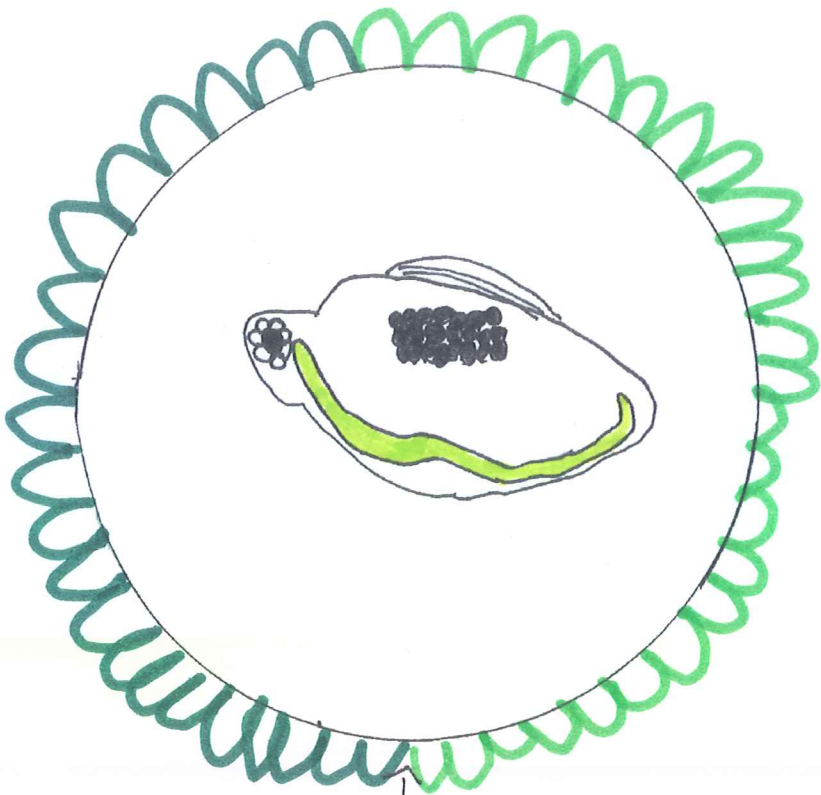
(平板)



(燈)

(顯微鏡)

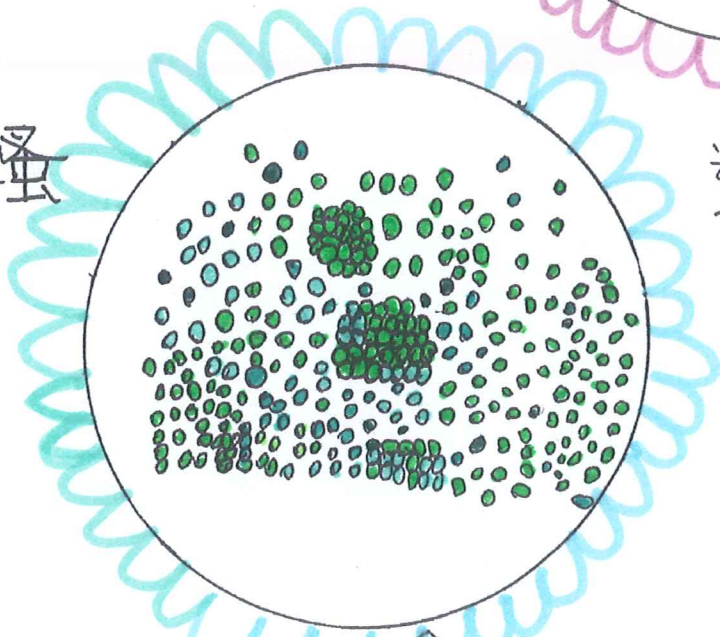
水蚤吃水藻，  
水蚤是孤雌  
生殖。



這是一隻有卵的水蚤



這是水蚤



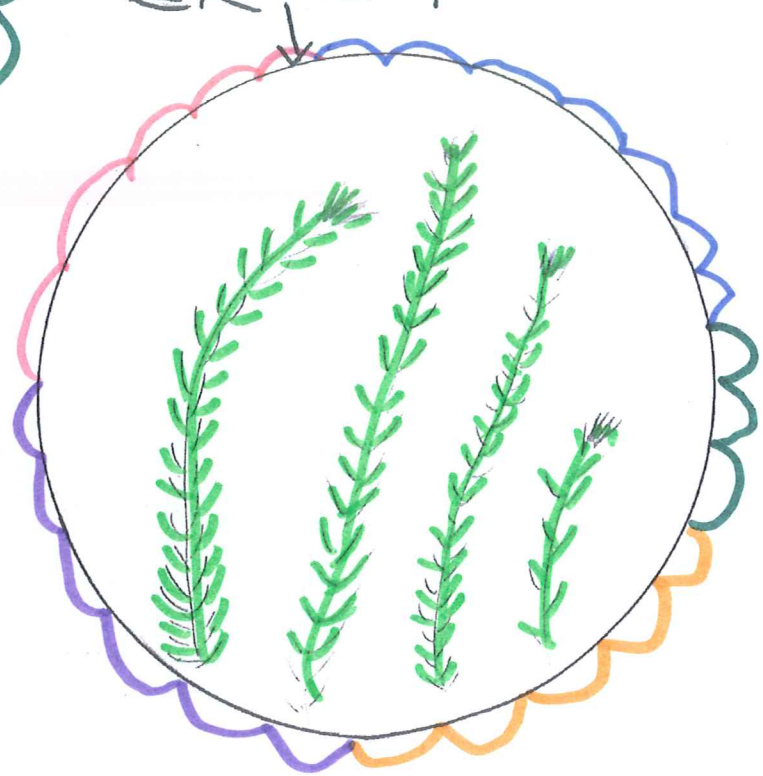
這是小球藻

這是沒有卵的水蚤



水蚤吃水藻  
水蚤是孤雌生殖

這是金魚草



耐久卵

